

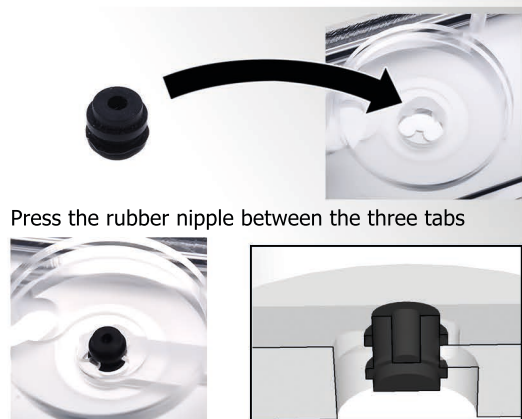
### Mounting two DC-LT pumps to the Alphacool Repack

The following is needed:

- 1x Alphacool Repack for DC-LT Pumps
- 2x DC-LT Pump
- 4x Inbus M3 x 8mm (included)
- 2x Rubber nipple (included)



Unscrew and remove the cover and the screws



Press the rubber nipple between the three tabs



Insert and align the axis from the pump in the hole of the rubber nipple



The pump axis must be placed exactly in the hole of the rubber nipple, please check!



Use the screws provided with the pump M3 x 8mm (Never use the cover screws!)



Ready to use!