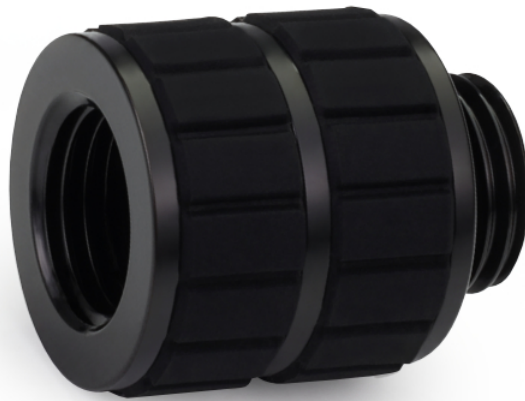


Alphacool Apex Grip extension 20mm OT/IT G1/4 black

Alphacool article number: 14812



Quick Info

The Alphacool Apex Grip fittings are built around a modular system that allows for flexible and customized connection solutions in modern custom water-cooling setups. Combined with the refined and distinctive Apex design, high-quality workmanship, and user-friendly handling, the series is an ideal choice for demanding systems.

- Modular design
- Optimized surface for better grip
- High flow performance
- Premium Apex design

Scope of delivery

1x Apex Grip extension 20mm OT/IT G1/4 black

Technical Data

| | |
|-----------------------|----------|
| Height | 25,50mm |
| Diameter | 20,10mm |
| Material | Brass |
| Material Grip Surface | Silicone |
| Threads | 2x G1/4 |
| Thread Length | 5mm |
| Color | black |

Download links

| | |
|--------------------|--|
| Product pictures | 14812_Alphacool_Apex_Grip_extension_20mm_OT-IT_G1-4_black_pics.zip |
| EU-DoC / CE / RoHS | Alphacool_EuDoc_CE_RoHS_14812.pdf |

Packaging dimensions per unit

| | |
|-----------|-----------------|
| L x W x H | 60 x 60 x 60 mm |
| Weight | 200 g |

Other data

| | |
|--------------|---------------|
| Certificates | CE, FC, RoHS |
| EAN | 4250197148122 |
| Customs code | 74198090980 |
| Guarantee | 5 years |

Article text

The Alphacool Apex Grip fittings are built around a modular system that allows for flexible and customized connection solutions in modern custom water-cooling setups. Combined with the refined and distinctive Apex design, high-quality workmanship, and user-friendly handling, the series is an ideal choice for demanding systems.

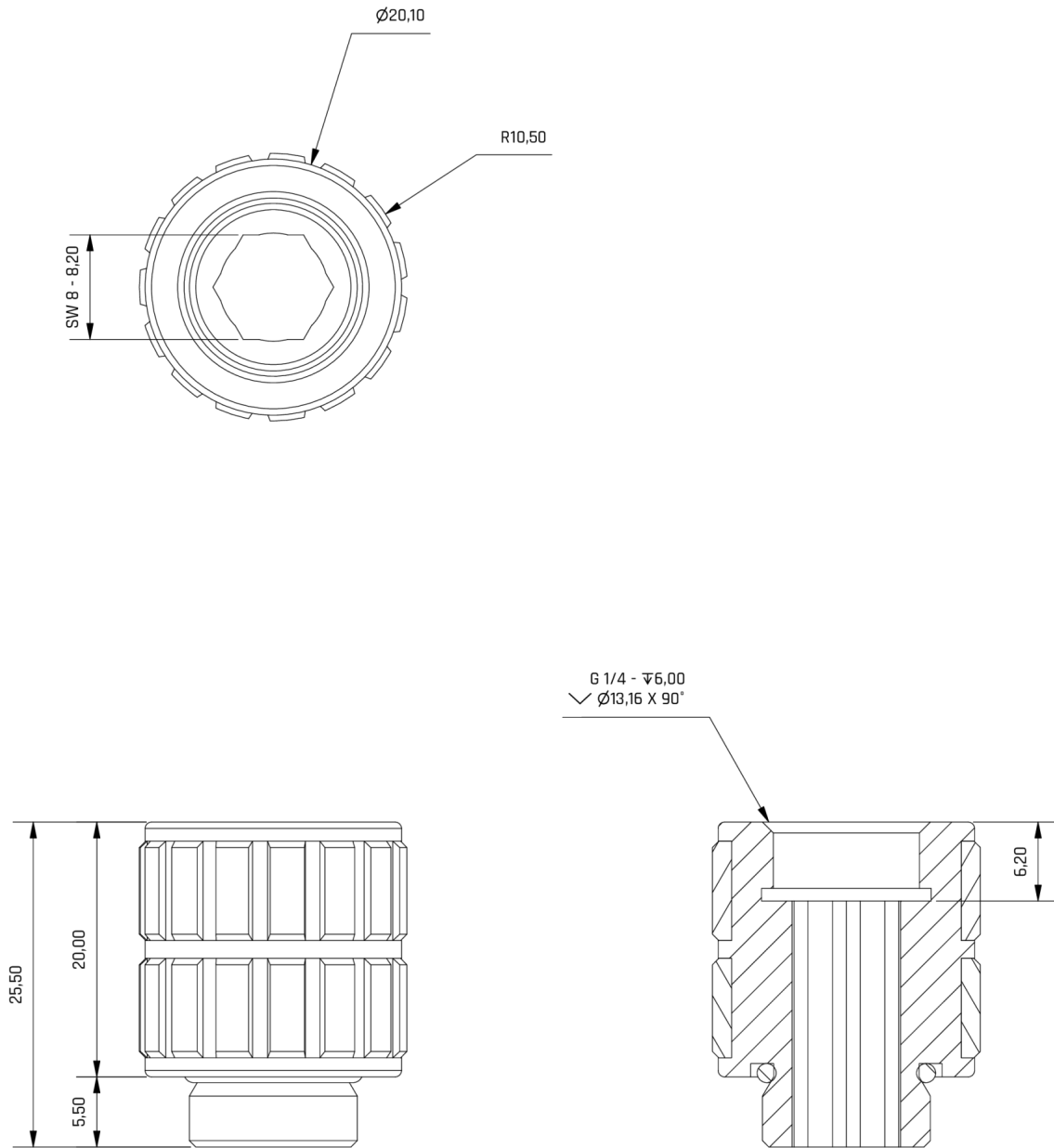
A defining feature of the Apex Grip series is the integrated silicone surface on the outer grip area of each fitting. It provides enhanced grip when tightening by hand and makes installation noticeably easier, especially in confined spaces with limited access. This not only improves installation comfort, but also gives the user greater control during assembly.

Made from high-quality brass, the fittings offer excellent stability and long-term durability. A premium coating further enhances the series by helping to prevent paint chipping while emphasizing its elegant overall appearance.

Precision manufacturing ensures a reliable seal within the cooling loop while supporting high-flow performance throughout the system. At the same time, the modular design offers a high degree of versatility, making the fittings easy to adapt to a wide range of custom water-cooling configurations.

The Apex Grip fittings are the perfect choice for anyone who values comfortable handling and a refined appearance in their custom water-cooling system.

Figure (1)



General tolerance: $\pm 0,25$ mm
Dimension in millimeter

Figure (2)

Mechanical properties:

| | |
|-----------------------------------|--|
| Minimum temperature t min = -20°C | Working pressure p = 0,0 - 2,0Bar |
| Working temperature t = 20°C | Maximum pressure p max = 4,0Bar |
| Maximum temperature t max = 60°C | Maximum torque of G thread M max = G1/4 = 1,0Nm <small>ISO 228-1 Parallel Whitworth pipe thread 6SPF (GB)</small> |

| Spare parts list | | | |
|------------------|----------|------------------|--------------|
| Number | Quantity | Description | Material |
| 1 | 1 | Main Part | CuZn39Pb3 |
| 2 | 1 | O-Ring 11x 1,5mm | NBR Shore 70 |
| 3 | 2 | Rubber Ring | NBR Shore 90 |

