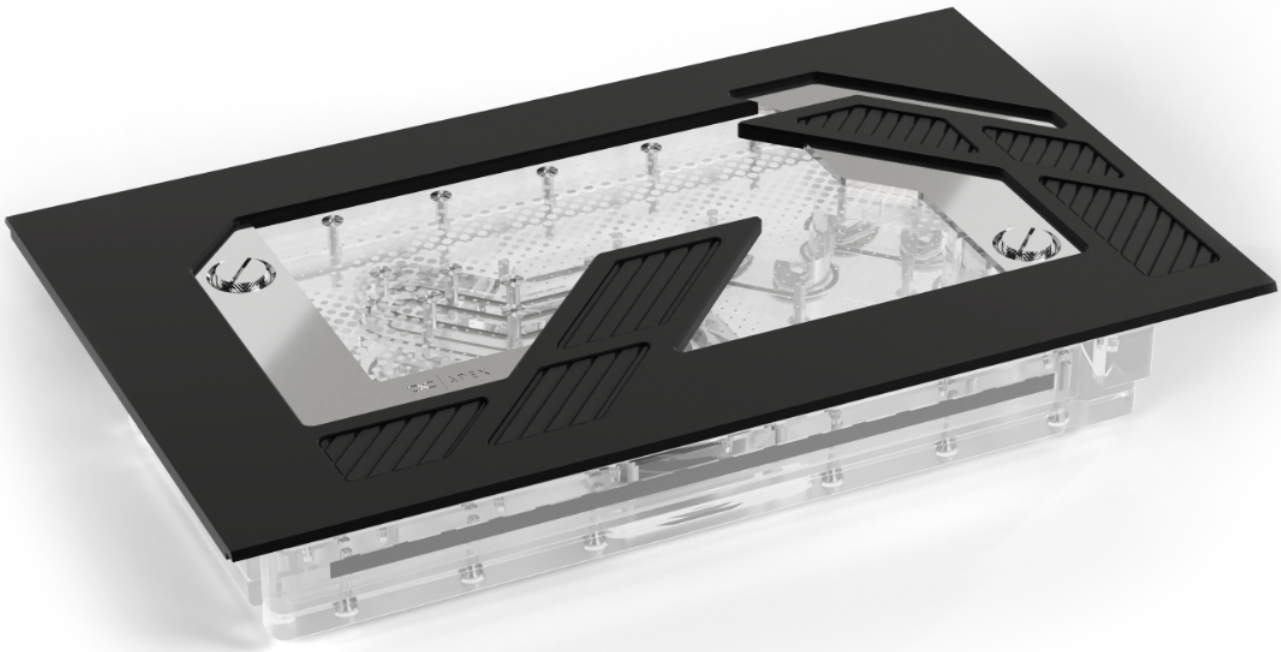
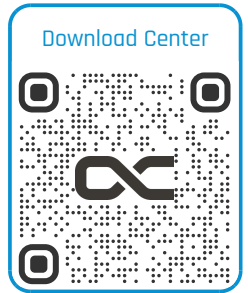


Alphacool Apex Distroplate Dark Base Pro 901 Black with Apex Pump

Alphacool article number: 14630



Quick Info

The Alphacool Apex Distro Plate is the ultimate visual upgrade for the Dark Base Pro 901. Specifically designed for this case, it replaces the front cover and takes any custom water cooling setup to the next level. A must-have for those who want to combine top performance with premium design.

- Distro Plate for the Dark Base Pro 901
- Matched to the design of the housing
- Supports inverted layout of the housing
- Brilliant aRGB Illumination
- Inklusive VPP Apex Pump

Scope of delivery

1x Apex Distro Plate	8x G1/4 Plug
1x VPP-D5 Pump	1x Plug tool
6x M4x16 Screw	1x ARGB Adapter
6x Mounting Screw Bracket	

Technical Data

Dimensions (L x W x H)	365,10 x 222 x 86,06mm
Material	Acryl
Volume	433ml
Pump compatibility	VPP/D5
Threads	12x G1/4" + 1x fill port and 1x drain port
Maximum working temperature	60°C
Pressure tested	0,8 Bar
Quantity digital aRGB LEDs	16
Power digital aRGB LEDs	5V
Power connection digital aRGB LEDs	3-pin JST + 3-pin 5V
Weight	3600g
Color	black

Technical data pump

Material pump	synthetic material
Material pump cover	aluminium
Material axle	ceramics
Connections	4-Pin PWM SATA
Rotational speed	2500 - 4500 RPM
Cable lengths	4-Pin PWM - 48cm SATA - 48cm
Operating voltage	8-13V DC / 14W IP32
Starting voltage	12V DC
Maximum pumping head	4,25m
Maximum flow rate	340L/h
Maximum working temperature	60°C
Color	black

Download links

Manual	14630_Alphacool_Apex_Distroplate_Dark_Base_Pro_901_Black_with_Apex_Pump_Manual.pdf
Product pictures	14630_Alphacool_Apex_Distroplate_Dark_Base_Pro_901_Black_with_Apex_Pump_pics.zip

Packaging dimensions per unit

L x W x H	390 x 270 x 120 mm
Weight	4590 g

Other data

Certificates	CE, FC, RoHS
EAN	4250197146302
Customs code	84733080000
Guarantee	3 years

Article text

The Alphacool Apex Distro Plate is the ultimate visual upgrade for the Dark Base Pro 901. Specifically designed for this case, it replaces the front cover and takes any custom water cooling setup to the next level. A must-have for those who want to combine top performance with premium design.

The Alphacool Apex product line stands for absolute perfection. Crafted with premium materials and advanced engineering, the Distro Plate guarantees a truly high-end product. The chrome-plated G1/4" fittings, made from solid brass, prevent leaks caused by cracks as they are not screwed directly into the acrylic. Instead, the two-piece fittings feature an O-ring and interlock during installation, ensuring a secure and reliable seal within the acrylic.

Made from high-grade acrylic glass, the Apex Distro Plate offers a clear view of the water cooling loop. Its integrated aRGB lighting creates an impressive play of colors, perfectly showcasing the case. The Distro Plate is available in two variants that differ only in color. Both the black and white versions perfectly match the Dark Base Pro 901's case colors and blend seamlessly into the design.

The Dark Base Pro 901 case offers numerous customization options, including an inverted layout. The Apex Distro Plate is perfectly adapted to these configurations. To ensure maximum flexibility, the Distro Plate features additional, specially designed ports that can be easily used even when the case's interior is built in an inverted orientation. The Distro Plate replaces the front cover and can be securely and easily mounted using the included M4x16 screws and mounting brackets. For an inverted layout, the Distro Plate must be rotated 180 degrees.

Note: The Apex Distro Plate for the Dark Base Pro 901 is exclusively compatible with this case.

