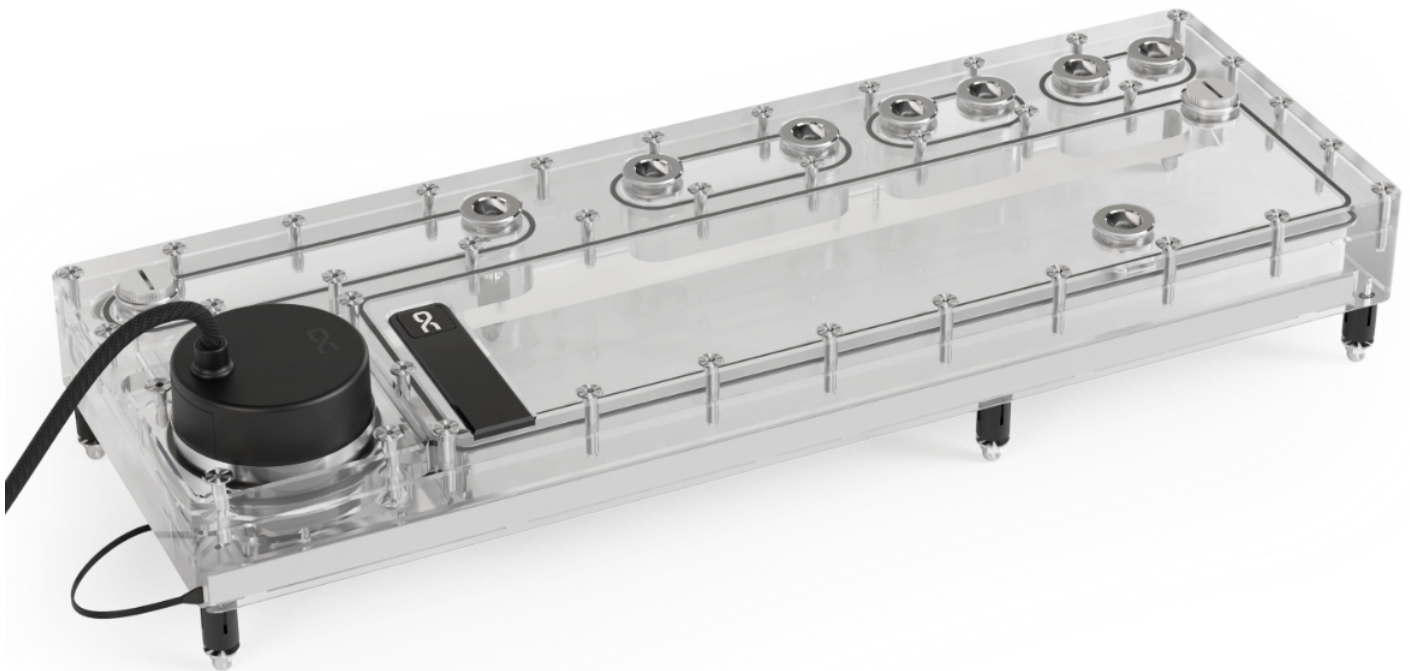


Alphacool Core Distro Plate 420 Left VPP/D5 with VPP Apex Pump

Alphacool article number: 14576

Download Center



Quick Info

The Alphacool Core Distro Plate with integrated pump is an absolute must-have for all custom water cooling systems! With its core design, it is not only an absolute eye-catcher, but also a functional masterpiece that simplifies the construction and planning of complex water loops and offers uncomplicated installation.

- Multiple mounting options
- Brilliant digital aRGB illumination
- Features a total of 10 G1/4" ports
- VPP Apex pump included

Scope of delivery

1x 420 Distro Plate

1x VPP-D5 Pump

1x O-Ring*

1x Allen Key

4x M4x22 Pump Screw

1x Core Push Mount Set

1x Plug tool

1x ARGB adapter

5x G1/4 Plug

Technical data

Dimensions (L x W x H)	420,00 x 145,00 x 42,00 mm
Dimensions (L x W x H) with pump	420,00 x 145,00 x 61,00 mm
Dimensions (L x W x H) with push mounting	420,00 x 145,00 x 72,80 mm
Dimensions (L x W x H) with pump + push mounting	420,00 x 145,00 x 88,80 mm
Material	acrylic
Volume	620ml
Pump compatibility	D5/VPP
Threads	10x G1/4" inner thread / 1x drain port
Maximum working temperature	60 °C
Pressure tested	0,8 Bar
Quantity of digital aRGB LEDs	17
Power digital aRGB LEDs	5V
Power connector digital aRGB LEDs	3-Pin JST + 3-Pin 5V
Weight	2580g
Color	transparent

Download links

Manual	14576_Alphacool_Core_Distro_Plate_420_Left_VPP-D5_with_VPP_Apex_Pump_Manual.pdf
Product pictures	14576_Alphacool_Core_Distro_Plate_420_Left_VPP-D5_with_VPP_Apex_Pump_pics.zip

Packaging dimensions per unit

L x W x H	490 x 160 x 100 mm
Weight	2980 g

Other data

Certificates	CE, FC, RoHS
EAN	4250197145763
Customs code	84733080000
Guarantee	3 years

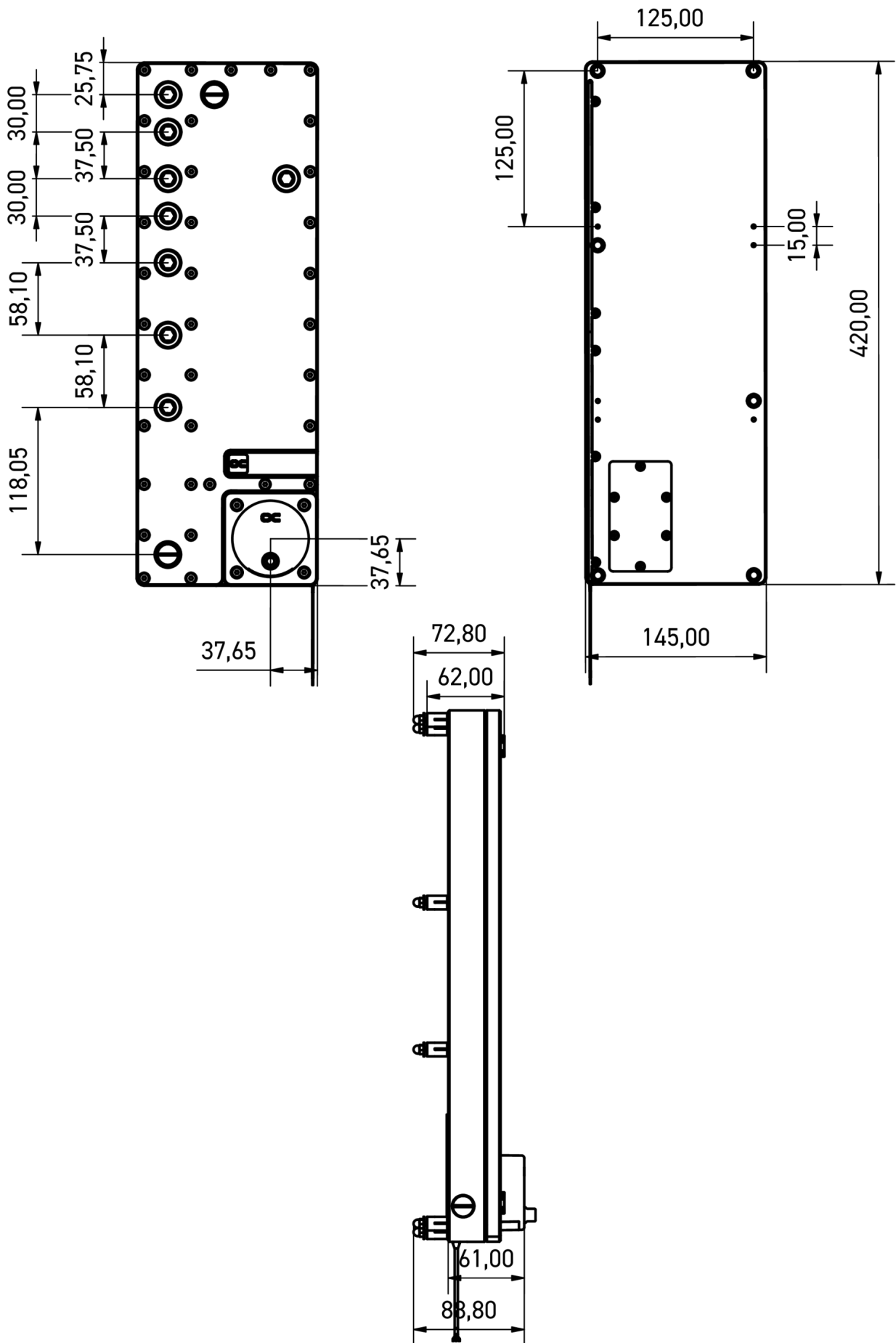
Article text

The Alphacool Core Distro Plate with integrated pump is an absolute must-have for all custom water cooling systems! With its core design, it is not only an absolute eye-catcher, but also a functional masterpiece that simplifies the construction and planning of complex water loops and offers uncomplicated installation.

The Distro Plate is made of high-quality acrylic and fitted with chrome-plated G1/4" brass connections. These have been recessed and deliberately not screwed in to minimise the risk of cracks and leaks while increasing stability. The connections are made of two parts, have an O-ring and counter each other when mounted in the acrylic. This not only ensures absolute leak proofing of each connector, but also allows for the clean and functional look of Alphacool's Core Design series.

The arrangement of the connections is designed not only to optimise tube routing, but also to provide an attractive appearance. This is complemented by its integrated aRGB lighting, which provides impressive visual effects. The lighting can be controlled either via a digital aRGB header on the mainboard or optionally via the Alphacool Aurora Eiscontrol aRGB controller (article no.: 15360).

The Alphacool Core Push Mounting Kit is included in the scope of delivery, which significantly simplifies the installation of the Distro Plate. The metal pins are attached to a radiator or the panel of the PC case and the matching female sleeves are attached to the distro plate so that you only have to push them onto the pins. This system ensures a secure fit of the distro plate and enables easy disassembly for maintenance or extensions. A detailed description can be found in the enclosed instructions.



General tolerance: $\pm 0,25$ mm
Dimension in millimeter