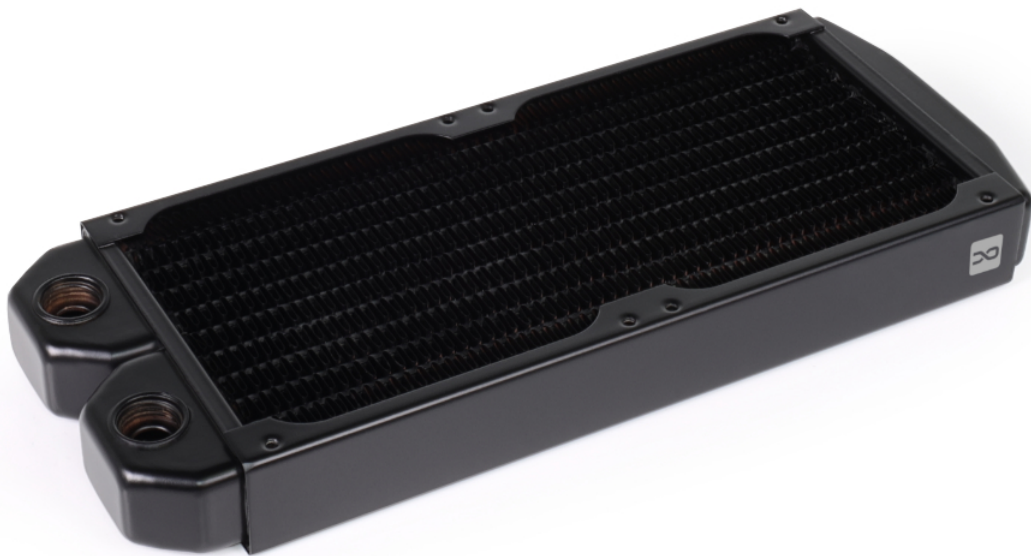


## Alphacool NexXxoS ST25 Full Copper 92mm Dual Radiator (184mm)

Alphacool article number: 14397



### Quick Info

Alphacool offers with the ST25 radiators an extremely flat version of the popular full copper NexXxoS radiators. Thanks to the low thickness of the radiators, they can also be very well accommodated in SFF housings. The use of copper for all watercarrying components and the cooling fins means that the cooling performance is outstanding.

- Copper radiator
- Ultra flat with 25 mm height
- Perfect cooling fins structure

### Scope of delivery

1 x Alphacool NexXxoS ST25 Full Copper 92mm Dual Radiator (184mm), Black  
8 x M3x28mm screw  
8 x M3 washer  
1 x Allen key

## Technical data

L x W x H	225 x 92 x 25 mm
Quantity of cooling channels	10
FPI	15
Material cooling fins	Copper
Material chambers	Copper
Material cooling channels	Copper
Material threads	Brass
Material outer housing	stainless steel
G 1/4" threads	2 x
For fan size	92 mm
Possible fan assembly	2 x one-sided / 4 x both-sided
Weight	322 g
Pressure tested	0,8 bar
Max working temperature	60 °C
Colour	Black

## Download links

Product pictures	<a href="#">14397_Alphacool_NexXxoS_ST25_Full_Copper_92mm_Dual_Radiator_(184mm)_pics.zip</a>
------------------	--

## Packaging dimensions per unit

L x W x H	285 x 100 x 35 mm
Weight	417 g

## Other data

Certificates	CE, FC, RoHS
EAN	4250197143974
Customs code	84195080900

Alphacool is an internationally renowned company in the field of water cooling solutions for both industrial and home users. To ensure that customers receive the best products available, Alphacool is constantly developing new products and making improvements to existing products.

### **Make No Compromises, Use Copper.**

As usual, Alphacool uses pure copper for the NexXoS ST25 slim radiators. The end chambers, the water channels and the cooling fins are all made of copper, a unique selling point worldwide. No other manufacturer relies on pure copper for all these components combined. As a result, Alphacool has been producing one of the most popular and highest performing radiators on the market for many years, providing the perfect foundation for every water cooling system.

### **Full Cooling Capacity**

To maximize the performance of a radiator, Alphacool reaches deep into its bag of tricks. Copper is the starting point. With a thermal conductivity of 400 W/(mK) for copper compared to 236 W/(mK) for aluminium, the winner is clear. Alongside this is the special fin density. Alphacool is one of the oldest companies in the field of water cooling and has carried out countless laboratory tests. The result is a fin spacing of 15 FPI. This means that the air flow is only slightly obstructed as the air can pass through even without high pressure. However, the cooling capacity does not suffer from this, on the contrary. To use the airflow optimally, all cooling fins have small serrations. These are tiny flaps that guide the airflow in the desired direction and increase the surface area. In the case of radiators, they are barely 1 mm high, but still provide controlled air turbulence to increase cooling capacity and minimise airflow noise.

### **Compact**

The ST25 slim radiators offer the ideal liquid cooling solution for Mini-PCs or SSF (Small Form Factor) systems. Due to the extremely flat design, the NexXoS ST25 radiators are ideal for such small cases and due to the reduced size, they give you the extra space you need to work in the case.