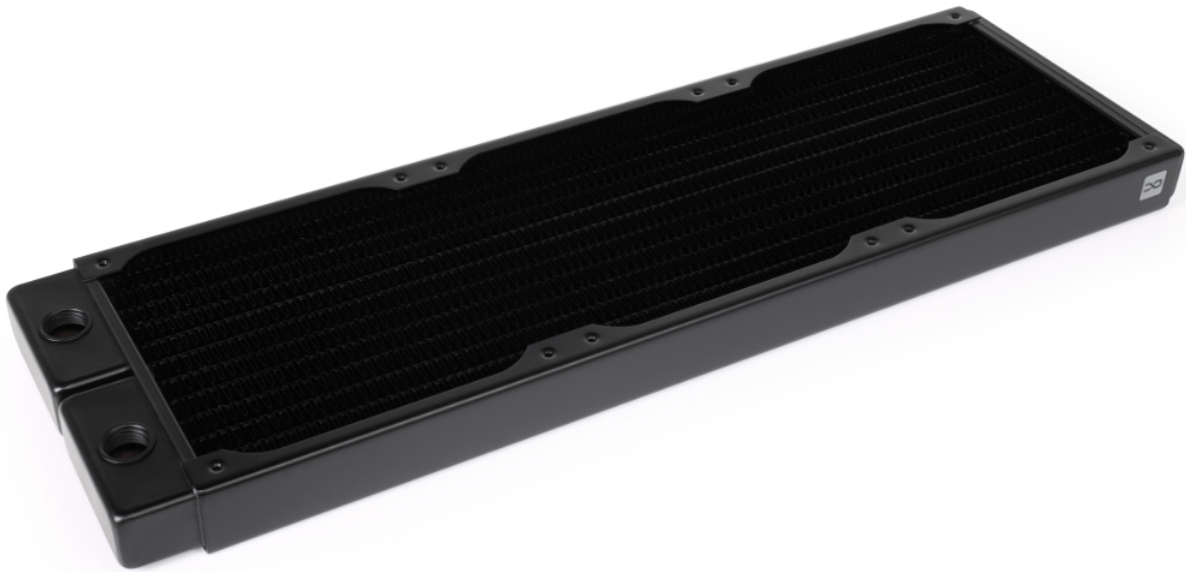


Alphacool NexXoS ST25 Full Copper 360mm radiator

Alphacool article number: 14354



Quick Info

Alphacool is an internationally renowned company in the field of water cooling solutions for both industrial and home users. To ensure that customers receive the best products available, Alphacool is constantly developing new products and making improvements to existing products.

- Copper radiator
- Ultra flat with 25 mm height
- Perfect cooling fins structure
- Safety plates against screwing in too deeply

Scope of delivery

12 x M3x30mm screws
12 x M3x5 mm screws
12 x M3x35 mm screws
1 x Allen key

Technical features

Dimensions (L x W x H)	393 x 120 x 22,5mm
Quantity of cooling channels	12
Fins per inch	15
Cooling channels	Copper
Color	black
Fan thread	M3
Number of fans	3
Slats	Copper
Connection	2x G1/4"
Fan size	120mm
Housing	Steel
Manufacturer	Alphacool
Pressure tested	0,8 bar
Thickness	0 - 29mm

Download links

Product pictures	14354_Alphacool_NexXxoS_ST25_Full_Copper_360mm_radiator_pics.zip
------------------	--

Packaging dimensions per unit

L x W x H	458 x 135 x 40 mm
Weight	970 g

Other data

Certificates	CE, FC, RoHS
EAN	4250197143547
Customs code	84195080900

Alphacool is an internationally renowned company in the field of water cooling solutions for both industrial and home users. To ensure that customers receive the best products available, Alphacool is constantly developing new products and making improvements to existing products.

Make No Compromises, Use Copper.

As usual, Alphacool uses pure copper for the NexXoS ST25 slim radiators. The end chambers, the water channels and the cooling fins are all made of copper, a unique selling point worldwide. No other manufacturer relies on pure copper for all these components combined. As a result, Alphacool has been producing one of the most popular and highest performing radiators on the market for many years, providing the perfect foundation for every water cooling system.

Full Cooling Capacity

To maximize the performance of a radiator, Alphacool reaches deep into its bag of tricks. Copper is the starting point. With a thermal conductivity of 400 W/(mK) for copper compared to 236 W/(mK) for aluminium, the winner is clear. Alongside this is the special fin density. Alphacool is one of the oldest companies in the field of water cooling and has carried out countless laboratory tests. The result is a fin spacing of 15 FPI. This means that the air flow is only slightly obstructed as the air can pass through even without high pressure. However, the cooling capacity does not suffer from this, on the contrary. To use the airflow optimally, all cooling fins have small serrations. These are tiny flaps that guide the airflow in the desired direction and increase the surface area. In the case of radiators, they are barely 1 mm high, but still provide controlled air turbulence to increase cooling capacity and minimise airflow noise.

Compact

The ST25 slim radiators offer the ideal liquid cooling solution for Mini-PCs or SSF (Small Form Factor) systems. Due to the extremely flat design, the NexXoS ST25 radiators are ideal for such small cases and due to the reduced size, they give you the extra space you need to work in the case.