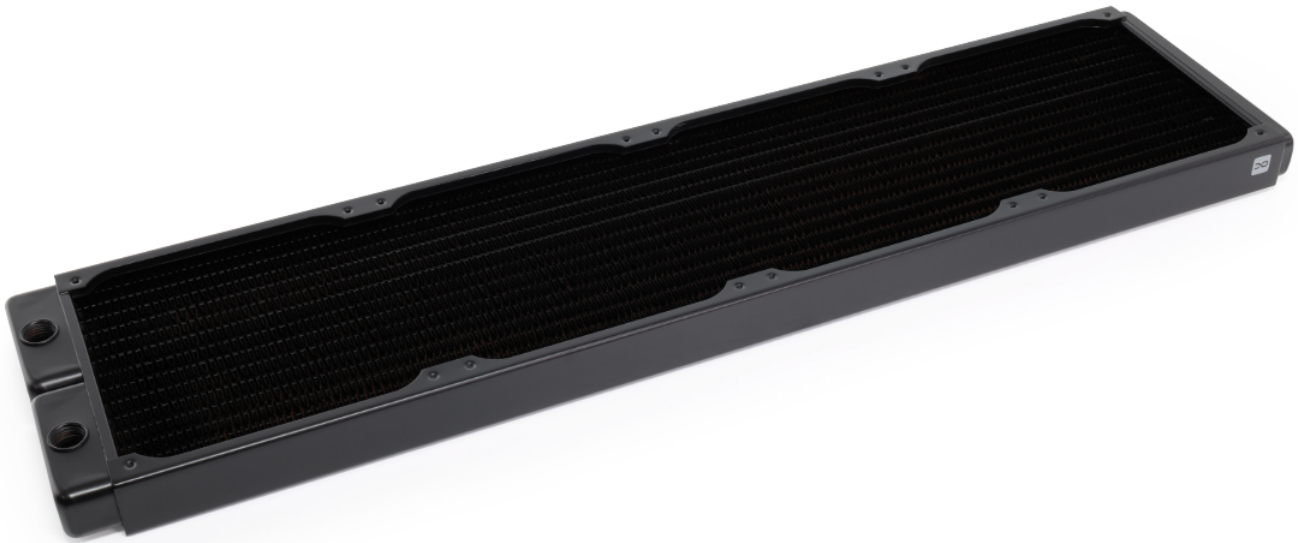
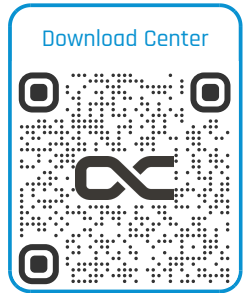


## Alphacool NexXoS ST30 Full Copper 560mm radiator V.2

Alphacool article number: 14347



### Quick Info

As usual, Alphacool uses pure copper for the NexXoS V.2 radiators. The end chambers, the water channels and the cooling fins are made of copper and are a unique selling point worldwide. No other manufacturer uses pure copper for all these components. As a result, Alphacool radiators have been among the most popular and best on the market for many years. The perfect foundation for any water cooling system.

- solid copper radiator
- patented flush stop fittings
- large cooling surface

### Scope of delivery

16 x M3x30	3 x screw plug
16 x M3x35	1 x allan key
16 x M3x6	1 x plug tool

## Technical data

L x W x H	596,5 x 144 x 30 mm
Net weight	1175 g
Material cooling fins	copper
Material cooling channels	copper
Prechamber material	copper
Material outer housing	steel
Fins per Inch	15
Threads	5 x G1/4"
Thread size fan mounting	M3
Fan size	140 mm
Fan slots	Single sided 4 / double sided 8
Pressure tested	0,8 bar

## Download links

Manual	<a href="#">14347_Alphacool_NexXoS_ST30_Full_Copper_560mm_radiator_V.2_Manual.pdf</a>
Product pictures	<a href="#">14347_Alphacool_NexXoS_ST30_Full_Copper_560mm_radiator_V.2_pics.zip</a>

## Packaging dimensions per unit

L x W x H	658 x 155 x 42 mm
Weight	1520 g

## Other data

Certificates	CE, FC, RoHS
EAN	4250197143479
Customs code	84195080900
Guarantee	10 years

### **Uncompromising choice of materials**

As usual, Alphacool uses pure copper for the NexXoS V.2 radiators. The end chambers, the water channels and the cooling fins are made of copper and are a unique selling point worldwide. No other manufacturer uses pure copper for all these components. As a result, Alphacool radiators have been among the most popular and best on the market for many years. The perfect foundation for any water cooling system.

### **Full cooling capacity**

To maximize the performance of a radiator, Alphacool reaches deep into the trickbox. Copper is the beginning. With a thermal conductivity of 400 W/(mK) for copper, compared to 236 W/(mK) for aluminium, the winner in this comparison is absolutely clear. The fin density is also specially chosen to work for the user. Alphacool is one of the oldest companies in the field of water cooling and has carried out countless tests in the laboratory. The result is a fin density of 15 FPI. This means that the air flow is only slightly obstructed so that the air can move through without high pressure, however, the cooling capacity does not suffer from this. On the contrary. In order to make optimum use of the air flow, all cooling fins have small flaps on them. Some may know these from motorsport or aircraft design. Flaps are tiny wings that direct the airflow in the desired direction. With radiators, these are barely 1 mm high, but still provide controlled air turbulence to increase cooling performance and minimize flow noise.

### **New generation of screw plugs**

All NexXoS V.2 radiators rely on the new patented stop fittings from Alphacool. Anyone who has mounted a radiator on the front or in the ceiling of a housing knows that protruding screw plugs can ruin the aesthetic as the radiator cannot be placed flush. Alphacool offers a solution with the new patented screw plugs. They are fully countersunk in the radiator and sit flush with its surface. This means that nothing stands in the way of clean installation. Of course, the radiators also look much more elegant with the new locking screws.

### **Plenty of connection options**

All versions of the NexXoS V.2 ST30 radiators have two connection options for IN and OUT, one on each side. On the opposite side to the in/outlets the NexXoS V.2 ST30 radiators now also have a fill or vent port. Of course, this connection can also be used to empty the water cooling loop. In any case, experienced users will be pleased.

### **The right size for every application**

The NexXoS V.2 radiators are available in all common sizes. From the compact 120 mm ST30 radiator to the 560 mm radiator for those who cannot get enough cooling power. Fans of 140 mm fans won't miss out though as Alphacool also covers all sizes from 140 mm up to the huge 420 mm XT45 radiator. And to take the whole thing to extremes, there are ST30 and XT45 versions for all radiators. These differ quite simply by the thickness. ST30 stands for a thickness of 30 mm, XT45 for a thickness of 45 mm.

### **Safety first**

The NexXoS V.2, like the previous NexXoS radiators, offers special protection that prevents screws from penetrating the radiator when attaching fans or when mounting the radiator to the case. Protective plates have been placed under all mounting holes to prevent the screws from being screwed in too deeply. This protects the cooling fins and channels underneath.

The King is Dead, Long live the King. Those who were happy with the previous NexXoS radiators will appreciate the many small improvements that the NexXoS V.2 radiators offer. Now one of the best radiators has been made even better. Your system deserves them.

**ATTENTION:** The NexXoS V.2 radiators are only compatible with connections with a maximum thread length of 5 mm