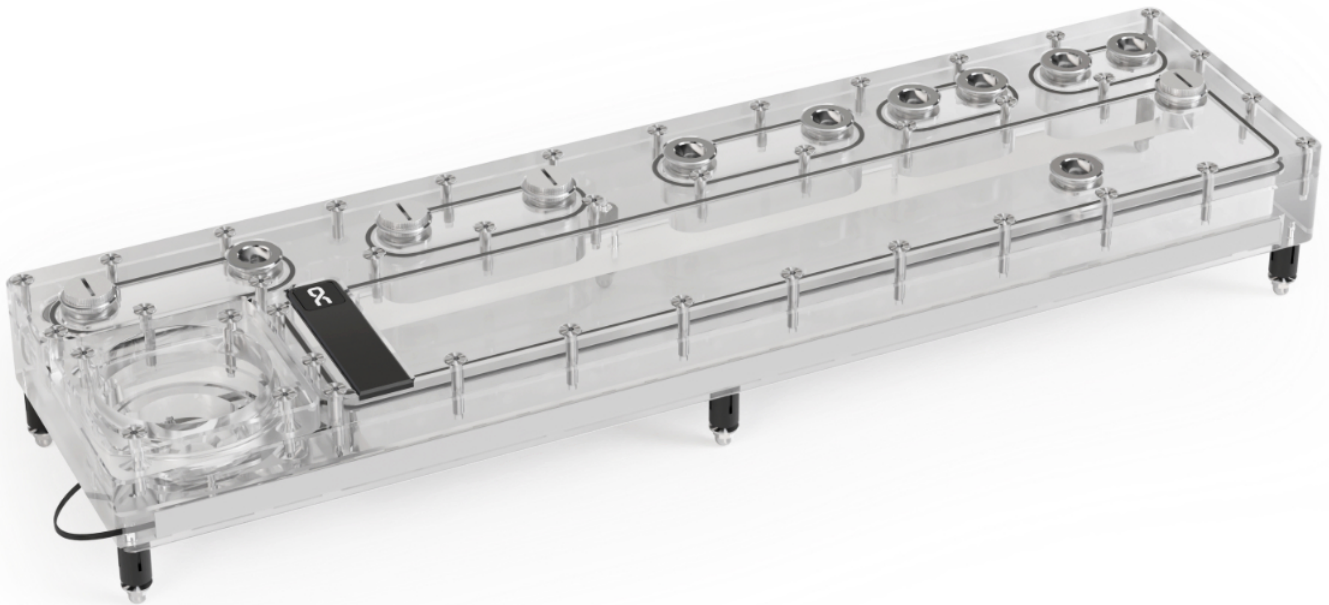


## Alphacool Core Distro Plate 480 Left VPP/D5

Alphacool article number: 13891

Download Center



### Quick Info

The Alphacool Core Distro Plate is an absolute must-have for all custom water cooling systems! With its core design, it is not only an absolute eye-catcher, but also a functional masterpiece that simplifies the construction and planning of complex water loops and offers uncomplicated installation.

- Multiple mounting options
- Brilliant digital aRGB illumination
- Features a total of 12 G1/4" ports
- Compatible with VPP/D5 pumps

### Scope of delivery

1x Distro Plate 480  
1x Allen Key  
4x M4x22 Pump Screw  
1x Core Push Mount Set

1x Plug tool  
1x ARGB adapter  
5x G1/4 Plug

## Technical data

Dimensions (L x W x H)	480,00 x 125,00 x 42,00 mm
Dimensions (L x W x H) with pump	480,00 x 125,00 x 61,00 mm
Dimensions (L x W x H) with push mounting	480,00 x 125,00 x 72,80 mm
Dimensions (L x W x H) with pump + push mounting	480,00 x 125,00 x 88,80 mm
Material	acrylic
Volume	565ml
Pump compatibility	D5/VPP
Threads	12x G1/4" inner thread / 1x drain port
Maximum working temperature	60 °C
Pressure tested	0,8 Bar
Quantity of digital aRGB LEDs	17
Power digital aRGB LEDs	5V
Power connector digital aRGB LEDs	3-Pin JST + 3-Pin 5V
Weight without pump	2414g
Weight with pump	2690g
Color	transparent

## Download links

Manual	<a href="#">13891_Alphacool_Core_Distro_Plate_480_Left_VPP-D5_Manual.pdf</a>
Product pictures	<a href="#">13891_Alphacool_Core_Distro_Plate_480_Left_VPP-D5_pics.zip</a>

## Packaging dimensions per unit

L x W x H	545 x 145 x 65 mm
Weight	2700 g

## Other data

Certificates	CE, FC, RoHS
EAN	4250197138918
Customs code	84733080000
Guarantee	3 years

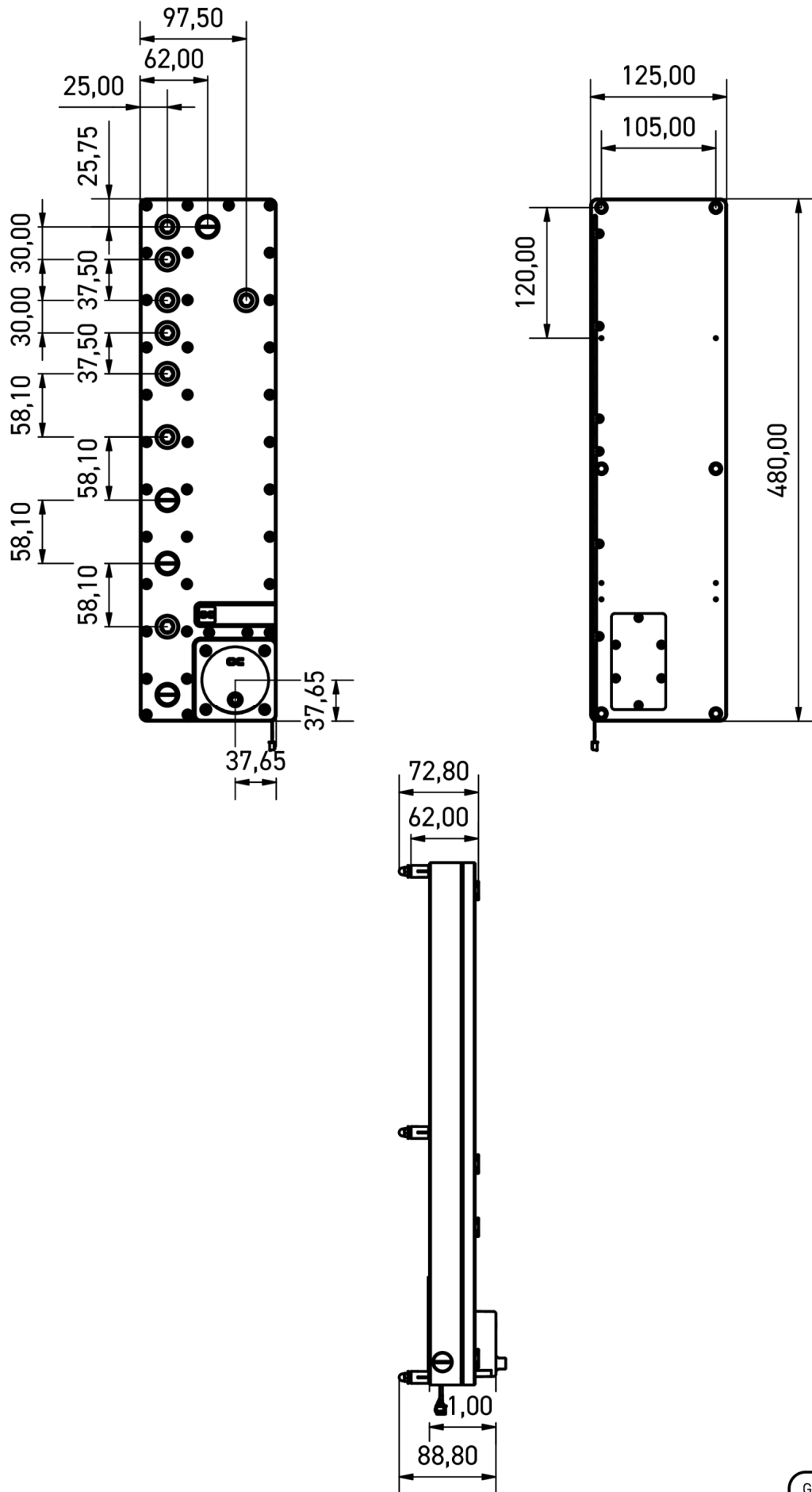
## Article text

The Alphacool Core Distro Plate is an absolute must-have for all custom water cooling systems! With its core design, it is not only an absolute eye-catcher, but also a functional masterpiece that simplifies the construction and planning of complex water loops and offers uncomplicated installation.

The Distro Plate is made of high-quality acrylic and fitted with chrome-plated G1/4" brass connections. These have been recessed and deliberately not screwed in to minimise the risk of cracks and leaks while increasing stability. The connections are made of two parts, have an O-ring and counter each other when mounted in the acrylic. This not only ensures absolute leak proofing of each connector, but also allows for the clean and functional look of Alphacool's Core Design series.

The arrangement of the connections is designed not only to optimise tube routing, but also to provide an attractive appearance. This is complemented by its integrated aRGB lighting, which provides impressive visual effects. The lighting can be controlled either via a digital aRGB header on the mainboard or optionally via the Alphacool Aurora Eiscontrol aRGB controller (article no.: 15360).

The Alphacool Core Push Mounting Kit is included in the scope of delivery, which significantly simplifies the installation of the Distro Plate. The metal pins are attached to a radiator or the panel of the PC case and the matching female sleeves are attached to the distro plate so that you only have to push them onto the pins. This system ensures a secure fit of the distro plate and enables easy disassembly for maintenance or extensions. A detailed description can be found in the enclosed instructions.



General tolerance:  $\pm 0,25\text{mm}$   
Dimension in millimeter