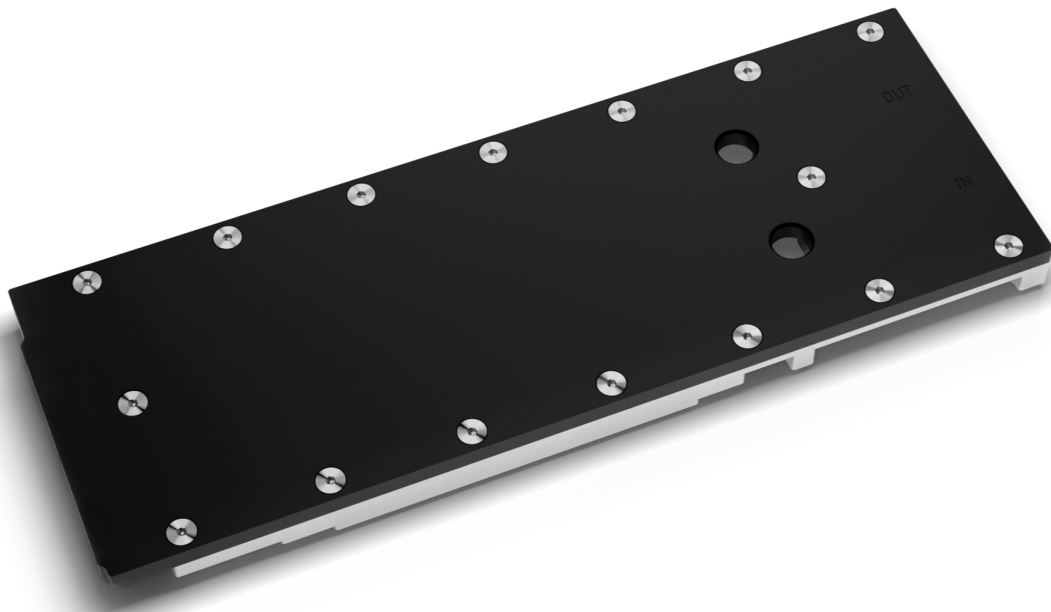
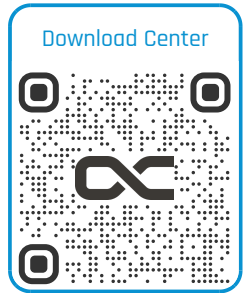


Alphacool ES Radeon PRO W7900

Alphacool article number: 13847



Quick Info

The Alphacool ES water cooler with backplate was specifically designed for the Alphacool Enterprise Series. The copper cooler meets the highest standards, making it reliable for use in servers and workstations.

- Fullcover water cooler
- Chrome-plated copper bottom
- High-performance cooling

Compatibility

- AMD Radeon PRO W7900, 48GB GDDR6, 3x DP, mDP (100-300000074)

Scope of delivery

1x ES Radeon PRO W7900 Cooler	5x M2x5mm Screw
1x Backplate	5x EVA Washer
8x M2x11mm Screw	1x 45x45x3mm GPU-Pad
3x 51x15x1mm Pad	2x 81x8x3mm Pad
1x 70x8x1mm Pad	3x 51x15x3mm Pad
1x 81x8x1mm Pad	3x M2,5x8mm Screw
1x Thermal Grease	1x PCI Bracket
1x Putty tool	

Technical data cooler

Dimensions (L x W x H)	280,75 x 100,01 x 26,30mm
Backplate height	3mm
Weight (total)	1470g
Material cooler	Chrome-plated copper
Material cooler top	Acetal
Threads	2 x G1/4"
Maximum working temperature	60 °C
Pressure tested	8 Bar

Download links

Manual	13847_Alphacool_ES_Radeon_PRO_W7900_Manual.pdf
Product pictures	13847_Alphacool_ES_Radeon_PRO_W7900_pics.zip

Packaging dimensions per unit

L x W x H	355 x 170 x 50 mm
Weight	1800 g

Other data

Certificates	CE, FC, RoHS
EAN	4250197138475
Customs code	84195080900
Guarantee	3 years

The Alphacool ES water cooler with backplate was specifically designed for the Alphacool Enterprise Series. The copper cooler meets the highest standards, making it reliable for use in servers and workstations.

This cooler is not 1U compatible!

More performance!

Alphacool positions the cooler optimally on the components to be cooled. By minimizing the thickness of the copper block and optimizing the water flow within the cooler, all critical parts such as the GPU, voltage regulators, and VRAMs can be cooled much more efficiently and effectively. This results in a significant improvement in cooling performance.

Chrome-plated copper

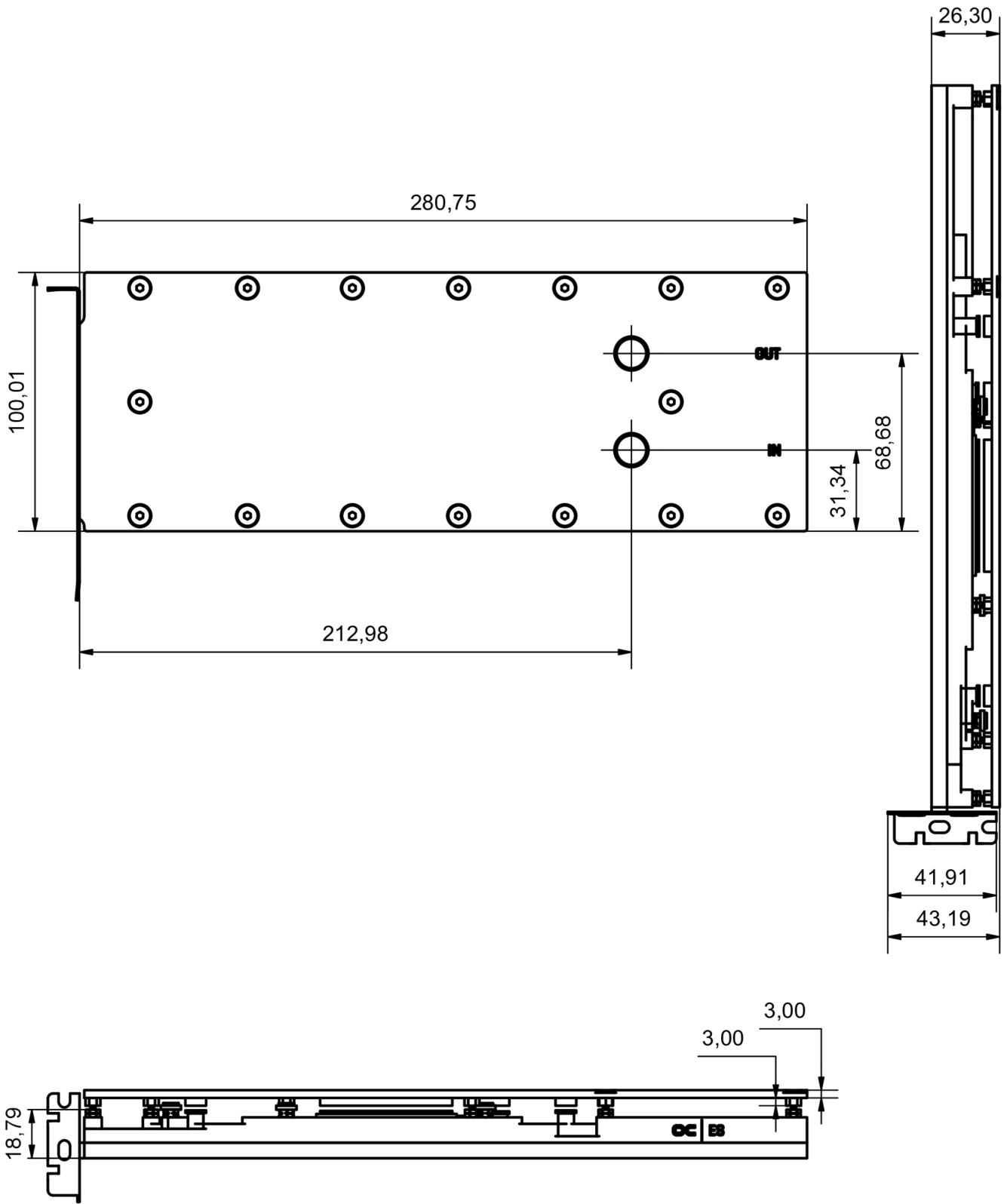
The cooler is made entirely of chrome-plated copper. A chrome plating is much harder than a nickel plating and therefore less sensitive to acids, scratches and damage. It completely eliminates the risk of chipping nickel plating. Additionally, chrome plating looks much more homogeneous and provides a shine that cannot be achieved by nickel plating.

Copper or aluminum?

Alphacool uses only copper for all water-bearing parts. Copper has almost twice the thermal conductivity of aluminum and is therefore clearly the better choice of material for water cooling. The chrome-plated copper base is highly resistant to acid, which means that chipping of the chrome plating can be ruled out.

Thermal paste & thermal pads

The electrically non-conductive thermal paste is particularly well suited for high contact pressures, but can still be easily applied due to its viscosity of 850000 TF. For the thermal pads, Alphacool uses soft pads that fit perfectly to the components to be cooled and are very durable.



General tolerance: $\pm 0,25$ mm
Dimension in millimeter