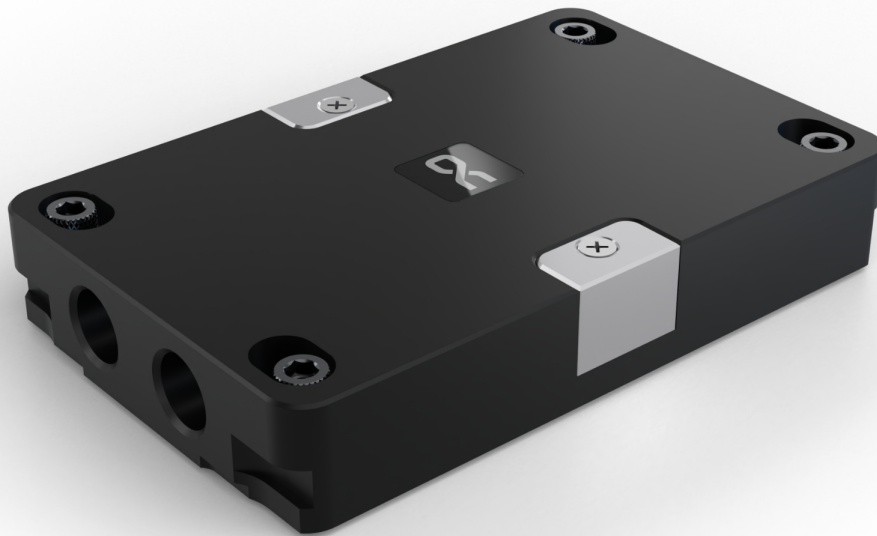


Alphacool ES Stream LGA 4677 1U

Alphacool article number: 13726



Quick Info

The Alphacool ES Stream is designed for server and workstation processors on Intel's LGA 4677 socket with large processor cores. Due to the large cooler bottom, the processor is completely covered. The ES Stream is a flow-through cooler, which can reliably dissipate waste heat of up to 600 watts. The entire cooler is made of nickel-plated copper and not aluminum. The thermal conductivity of copper is almost twice as high as that of aluminum.

- Flexible flow direction
- nickel plated copper cooling block
- Ideal for server and workstations

Compatibility

AMD: SP5 (LGA 6096) (optional)

Intel: LGA 4677

Scope of delivery

1x ES Stream 1U CPU Cooler
1x Carrier
1x Subzero 16 W/mK Thermal Grease
1x Putty tool
4x Nut

Technical data

Dimensions (L x W x H)	118,50 x 75,50 x 20,50mm
Material cooler top	Acetal
Material cooler	nickel plated copper
Cooling capacity	up to 600W
Pressure tested	0,8 bar
Threads	2 x G1/4"
Fin thickness	0,4mm
Fin distance	0,4mm
Max working temperature	60 °C
Color	black

Download links

Manual	13726_Alphacool_ES_Stream_LGA_4677_1U_Manual.pdf
Product pictures	13726_Alphacool_ES_Stream_LGA_4677_1U_pics.zip

Packaging dimensions per unit

L x W x H	150 x 100 x 50 mm
Weight	500 g

Other data

Certificates	CE, FC, RoHS
EAN	4250197137263
Customs code	84195080900

Article text

The Alphacool ES Stream is designed for server and workstation processors on Intel's LGA 4677 socket with large processor cores. Due to the large cooler bottom, the processor is completely covered. The ES Stream is a flow-through cooler, which can reliably dissipate waste heat of up to 600 watts. The entire cooler is made of nickel-plated copper and not aluminum. The thermal conductivity of copper is almost twice as high as that of aluminum.

Flexible application!

The ES Stream has a flat and compact design and therefore fits well in server racks. Particularly noteworthy is that the flow direction of the cooling water is not predetermined. The inlet and outlet of the connections can be exchanged as desired. This provides flexible mounting options.

Thermal paste

The included thermal paste is Alphacool's Subzero with a thermal conductivity of 16 W/mK. The electrically non-conductive Thermal Grease is particularly well suited for high contact pressures, but can still be processed perfectly due to the viscosity of 3,000,000 mPa. s.

Alphacool ES Stream LGA 4677 1U

