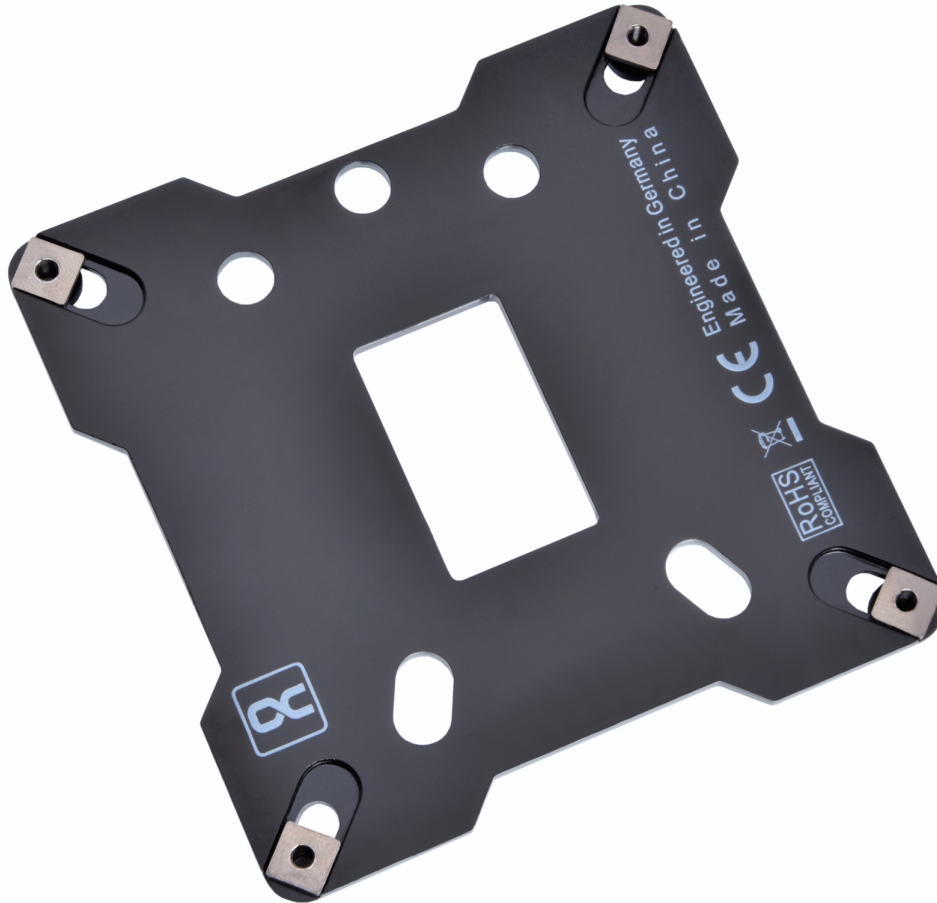


Alphacool Core Backplate XPX/Eisbaer LGA 115X/1200/1700 Metall

Alphacool article number: 13071

Download Center



Quick Info

The Alphacool Core metal backplate for XPX, XPX Aurora, XPX Aurora Edge, XPX 1U, XPX Pro 1U, XPX Pro Aurora, Eisbaer, Eisbaer Aurora, Eisbaer Pro, Eisbaer LT is compatible with Intel's LGA 115X, 1200, 1700 and 1851 sockets. This includes solo water coolers and CPU AIOs.

- Improved contact pressure
- Stable fit of the water cooler on the socket
- Maximum cooling performance

Compatibility

Intel: LGA 1150 / 1151 / 1155 / 1200 / 1700 / 1851

Scope of delivery

1x Alphacool Core Backplate XPX/Eisbaer LGA 115X/1200/1700/1851 Metall, black

Technical data

L x W x H	90 x 90 x 3 mm
Material	stainless steel
Weight	149 g
Color	black

Download links

Manual	13071_Alphacool_Core_Backplate_XPX-Eisbaer_LGA_115X-1200-1700_Metall_Manual.pdf
Product pictures	13071_Alphacool_Core_Backplate_XPX-Eisbaer_LGA_115X-1200-1700_Metall_pics.zip

Packaging dimensions per unit

L x W x H	110 x 135 x 10 mm
Weight	151 g

Other data

Certificates	CE, FC, RoHS
EAN	4250197130714
Customs code	84199085900

Article text

The Alphacool Core metal backplate for XPX, XPX Aurora, XPX Aurora Edge, XPX 1U, XPX Pro 1U, XPX Pro Aurora, Eisbaer, Eisbaer Aurora, Eisbaer Pro, Eisbaer LT is compatible with Intel's LGA 115X, 1200, 1700 and 1851 sockets. This includes solo water coolers and CPU AIOs.

The backplate is made of stainless steel and is covered with an insulating polymer layer on the back. The material composition of the backplate ensures that the CPU cooler is additionally stabilised and can be mounted on the socket with improved contact pressure. All in all, this leads to a considerable improvement in cooling performance compared to the previously used plastic backplates. This effect is most clearly measurable with Intel's socket LGA 1700. There is an additional adhesive surface on the back of the backplate that serves as an installation aid and thus makes mounting much easier.

