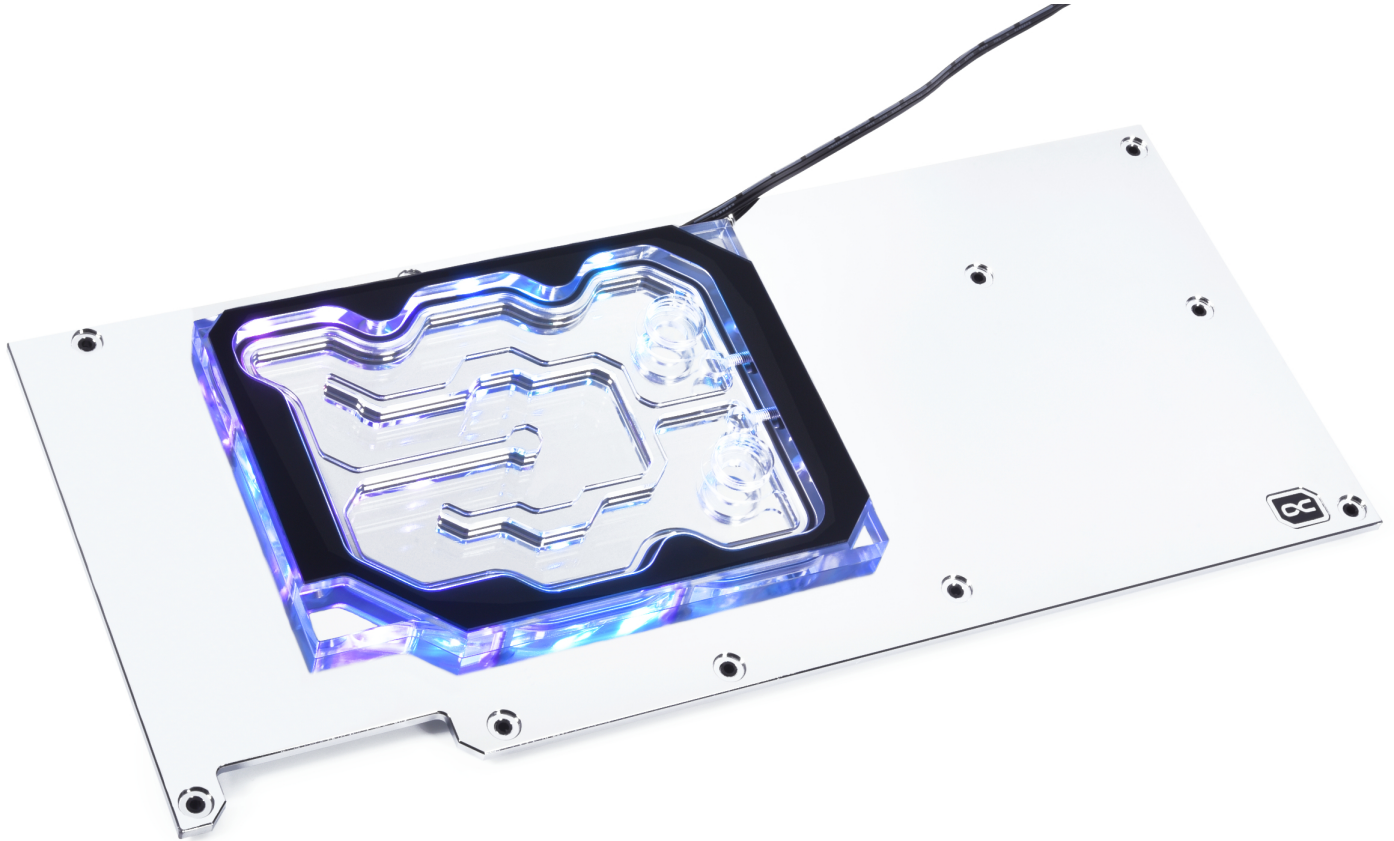


Alphacool Eisblock Aurora GPX-N Acryl Active Backplate 3080/3090 FTW3

Alphacool article number: 13043



Quick Info

The Alphacool Eisblock Aurora GPX-N Acrylic Active Backplate for Geforce RTX 3080/3090 graphics cards is the perfect upgrade for Alphacool's Eisblock Aurora Acrylic GPX-N GPU custom water coolers as well as Alphacool's Eiswolf 2 GPU AIOs (see compatibility details). With the help of the backplate, consisting of nickel-plated copper, the back of Geforce RTX 3080/3090 graphics cards can now also be actively water-cooled, thus achieving a significant increase in cooling performance.

- Nickel-plated copper cooler
- Addressable digital RGB LEDs
- Extreme cooling performance

Compatibility

- Alphacool Eiswolf 2 AIO - 360mm RTX 3080/3090 FTW3 with backplate (article number: 14414)
- Alphacool Eisblock Aurora Acryl GPX-N RTX 3080/3090 FTW3 with backplate (article number: 11943)

Scope of delivery

| | |
|--------------------------|--------------------------|
| 1x 15x15x1mm thermal pad | 1x 8x100x3mm thermal pad |
| 2x 15x51x1mm thermal pad | 11x M2x11 screws |
| 1x 15x38x1mm thermal pad | 2x screw plugs |
| 1x 30x30x2mm thermal pad | 2x MCX fitting plugs |
| 1x 8x74x3mm thermal pad | 1x Plug Tool |

Technical data

| | |
|-----------------------------------|-------------------------------------|
| L x W x H | 289,90 x 125,65 x 13,3 mm |
| Material backplate | copper, nickel-plated |
| Material cooler | acrylic |
| Threads Water cooling | 2x G1/4" 2x 5/3mm tube connection |
| Illumination | 6x digital addressable RGB LEDs |
| Power connector digital aRGB LEDs | 3-pin JST (male & female switch) |
| Power digital aRGB LEDs | 5V |
| Maximum working temperature | 60 °C |
| Pressure tested | 0,8 Bar |
| Weight | 1032 g |

Download links

| | |
|------------------|--|
| Manual | 13043_Alphacool_Eisblock_Aurora_GPX-N_Acryl_Active_Backplate_3080-3090_FTW3_Manual.pdf |
| Product pictures | 13043_Alphacool_Eisblock_Aurora_GPX-N_Acryl_Active_Backplate_3080-3090_FTW3_pics.zip |

Packaging dimensions per unit

| | |
|-----------|-------------------|
| L x W x H | 353 x 170 x 45 mm |
| Weight | 1280 g |

Other data

| | |
|--------------|---------------|
| Certificates | CE, FC, RoHS |
| EAN | 4250197130431 |
| Customs code | 84195080900 |

Article text

The Alphacool Eisblock Aurora GPX-N Acrylic Active Backplate for Geforce RTX 3080/3090 graphics cards is the perfect upgrade for Alphacool's Eisblock Aurora Acrylic GPX-N GPU custom water coolers as well as Alphacool's Eiswolf 2 GPU AIOs (see compatibility details). With the help of the backplate, consisting of nickel-plated copper, the back of Geforce RTX 3080/3090 graphics cards can now also be actively water-cooled, thus achieving a significant increase in cooling performance.

Connection options

There are 2 different ways to incorporate the backplate into your existing watercooling loop:

Variant 1

The cooler has an inlet and outlet with G1/4" internal thread on the top side respectively. With suitable connections and hoses/hard tubes, the backplate can be easily integrated into the water circuit.

Variant 2

The cooler has an inlet and outlet on the side suitable for 5/3mm hoses. With the help of Alphacool's MCX 2x manifold with 5/3mm tubing (item 1022250), the active backplate can be easily integrated into the water circuit in a space-saving way. This variant is a sensible choice if there is little space in the PC case and tubing runs will be difficult to do. **(Note: Only works with Eisblock Aurora Acryl/ES Acetal GPX-N GPU custom water coolers.**

Cannot be used in combination with Alphacool Eiswolf 2 AIOs!

The connection options are very flexible for both variants, as the inlet and outlet can be freely selected depending on the design.

Brilliant illumination

Six addressable digital RGB LEDs are directly recessed and run along the sides of the entire cooling block. This illuminates the entire cooling block and creates unique lighting effects. The Digital aRGB LED lighting is connected via a JST 3-pin connector and can be controlled with a Digital RGB controller (e.g. Alphacool Aurora Eiscontrol, Art.15360) or a Digital RGB capable motherboard.

Drawing

