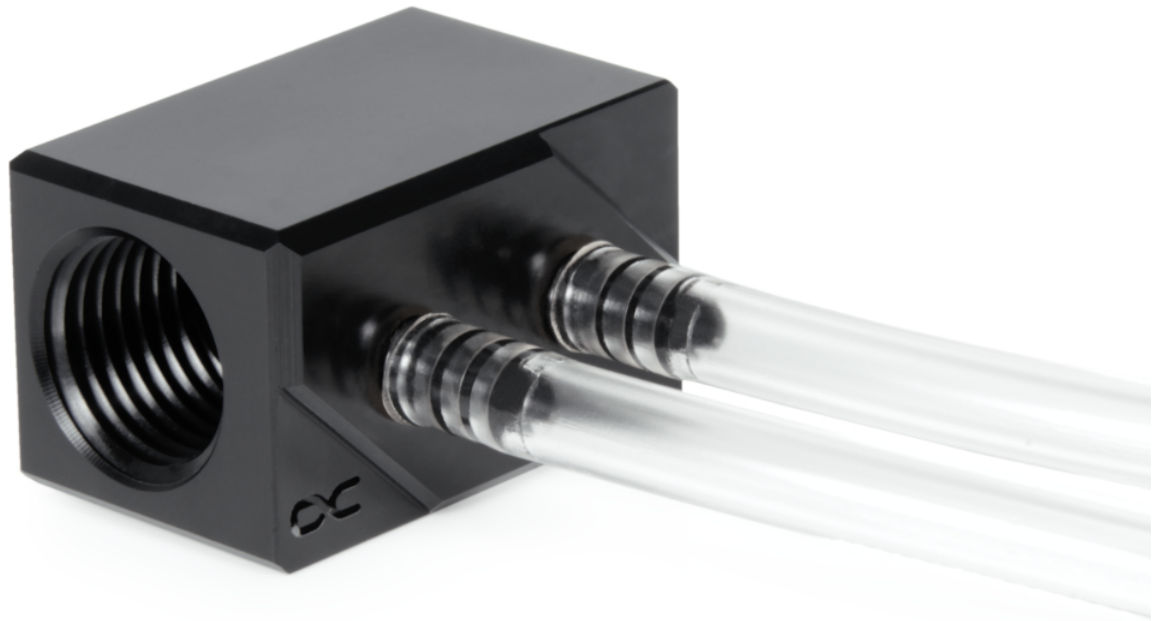


Alphacool MCX 2x distributor with 1m 5/3mm hose

Alphacool article number: 13041



Quick Info

Flexibility and design with optimal performance! The Alphacool MCX 2x distributor made of acetal offers various areas of application.

- Flexible to use
- Simple assembly
- Modern design

Scope of delivery

1x Alphacool MCX 2x distributor, black
1x 1m 5/3mm PVC hose, transparent

Technical data

L x W x H distributor	30 x 29 x 18 mm
Material distributor	acetal
Length hose	1 m
Hose size	5/3mm
Material hose	PVC
Connections	2x G1/4" inner thread 2x hose nozzles 3mm screwed in
Max. Thread length G1/4" Connections	5,5 mm
Max working temperature	60 °C
Pressure tested	0,8 Bar
Weight	28 g
Color	black

Download links

Product pictures	13041_Alphacool_MCX_2x_distributor_with_1m_5-3mm_hose_pics.zip
------------------	--

Packaging dimensions per unit

L x W x H	150 x 120 x 30 mm
Weight	30 g

Other data

Certificates	CE, FC, ROHS
EAN	4250197130417
Customs code	84195080900

Article text

Flexibility and design with optimal performance! The Alphacool MCX 2x distributor made of acetal offers various areas of application.

It opens up the possibility to easily integrate Alphacool's active backplates or MCX water coolers into the water circuit. This allows e.g. RAM devices and voltage converters on graphics cards to be cooled more efficiently. The integration of the MCX 2x distributor into the water circuit is uncomplicated via 2 G1/4" connections with internal thread. Alphacool's connections from the Eiszapfen series are recommended here. A transparent 5/3mm PVC hose is included in the delivery. With a length of 1m, the hose offers sufficient leeway for a flexible installation of the distributor.