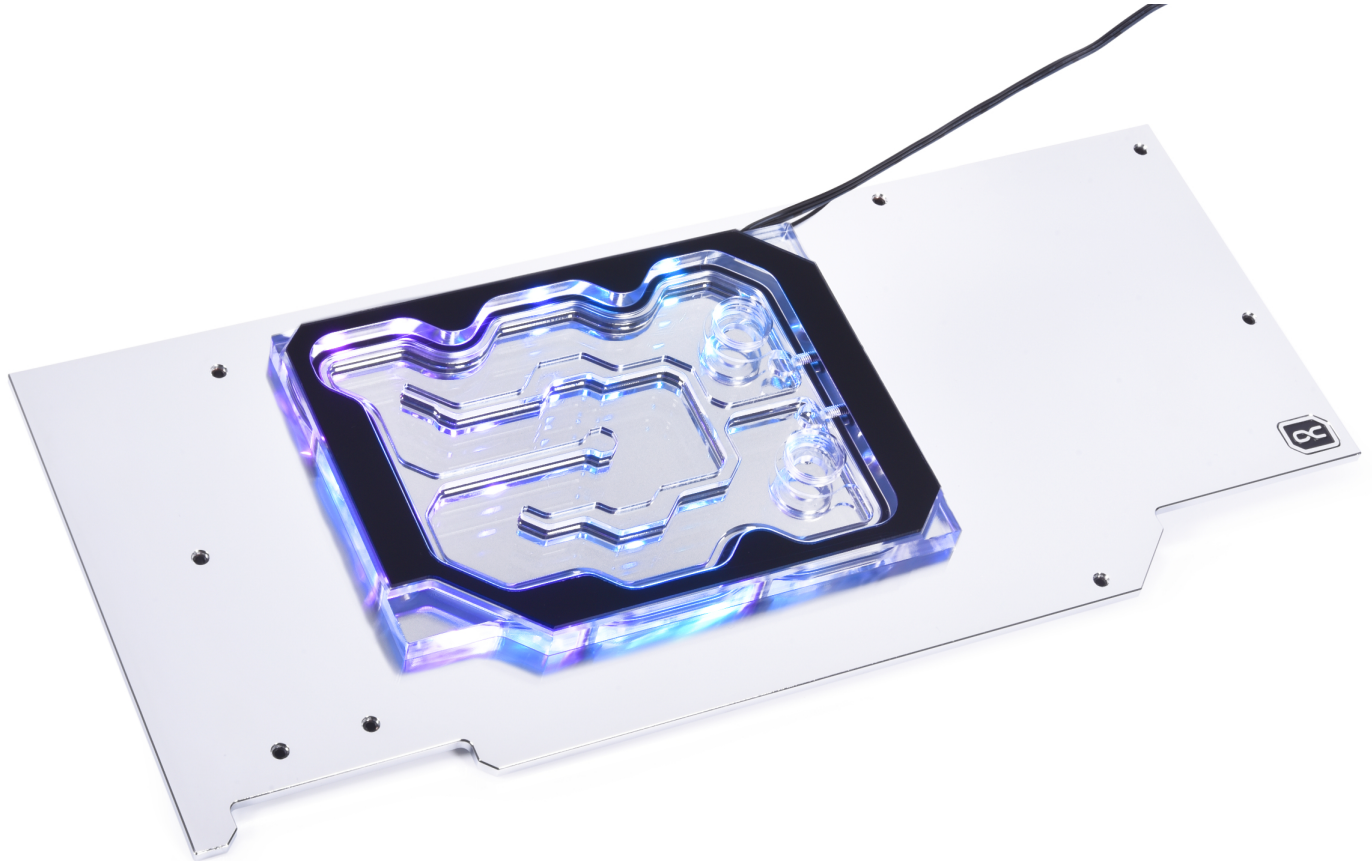


Alphacool Eisblock Aurora GPX-N Acryl Active Backplate 3080/3090 Suprim X

Alphacool article number: 13040



Quick Info

The Alphacool Eisblock Aurora GPX-N Acrylic Active Backplate for Geforce RTX 3080/3090 graphics cards is the perfect upgrade for Alphacool's Eisblock Aurora Acrylic GPX-N GPU custom water coolers (see compatibility details). With the help of the backplate, consisting of nickel-plated copper, the back of Geforce RTX 3080/3090 graphics cards can now also be actively water-cooled, thus achieving a significant increase in cooling performance.

- Nickel-plated copper cooler
- Addressable digital RGB LEDs
- Extreme cooling performance

Compatibility

- Alphacool Eisblock Aurora Acryl GPX-N RTX 3090/3080 Suprim X with backplate (article number: 11938)

Scope of delivery

1x 15x15x1mm thermal pad	1x 8x100x3mm thermal pad
2x 15x51x1mm thermal pad	8x M2x11 screws
1x 15x38x1mm thermal pad	2x screw plugs
1x 30x30x2mm thermal pad	2x MCX fitting plugs
1x 8x77x3mm thermal pad	1x Plug Tool

Technical data

L x W x H	295 x 127,25 x 13,3 mm
Material backplate	copper, nickel-plated
Material cooler	acrylic
Threads Water cooling	2x G1/4" 2x 5/3mm tube connection
Illumination	6x digital addressable RGB LEDs
Power connector digital aRGB LEDs	3-pin JST (male & female switch)
Power digital aRGB LEDs	5V
Maximum working temperature	60 °C
Pressure tested	0,8 Bar
Weight	1054 g

Download links

Manual	13040_Alphacool_Eisblock_Aurora_GPX-N_Acryl_Active_Backplate_3080-3090_Suprim_X_Manual.pdf
Product pictures	13040_Alphacool_Eisblock_Aurora_GPX-N_Acryl_Active_Backplate_3080-3090_Suprim_X_pics.zip

Packaging dimensions per unit

L x W x H	353 x 170 x 45 mm
Weight	1315 g

Other data

Certificates	CE, FC, RoHS
EAN	4250197130400
Customs code	84195080900

Article text

The Alphacool Eisblock Aurora GPX-N Acrylic Active Backplate for Geforce RTX 3080/3090 graphics cards is the perfect upgrade for Alphacool's Eisblock Aurora Acrylic GPX-N GPU custom water coolers (see compatibility details). With the help of the backplate, consisting of nickel-plated copper, the back of Geforce RTX 3080/3090 graphics cards can now also be actively water-cooled, thus achieving a significant increase in cooling performance.

Connection options

There are 2 different ways to incorporate the backplate into your existing watercooling loop:

Variant 1

The cooler has an inlet and outlet with G1/4" internal thread on the top side respectively. With suitable connections and hoses/hard tubes, the backplate can be easily integrated into the water circuit.

Variant 2

The cooler has an inlet and outlet on the side suitable for 5/3mm hoses. With the help of Alphacool's MCX 2x manifold with 5/3mm tubing (item 1022250), the active backplate can be easily integrated into the water circuit in a space-saving way. This variant is a sensible choice if there is little space in the PC case and tubing runs will be difficult to do. **(Note: Only works with Eisblock Aurora Acryl/ES Acetal GPX-N GPU custom water coolers.**

Cannot be used in combination with Alphacool Eiswolf 2 AIOs!

The connection options are very flexible for both variants, as the inlet and outlet can be freely selected depending on the design.

Brilliant illumination

Six addressable digital RGB LEDs are directly recessed and run along the sides of the entire cooling block. This illuminates the entire cooling block and creates unique lighting effects. The Digital aRGB LED lighting is connected via a JST 3-pin connector and can be controlled with a Digital RGB controller (e.g. Alphacool Aurora Eiscontrol, Art.15360) or a Digital RGB capable motherboard.

Drawing

