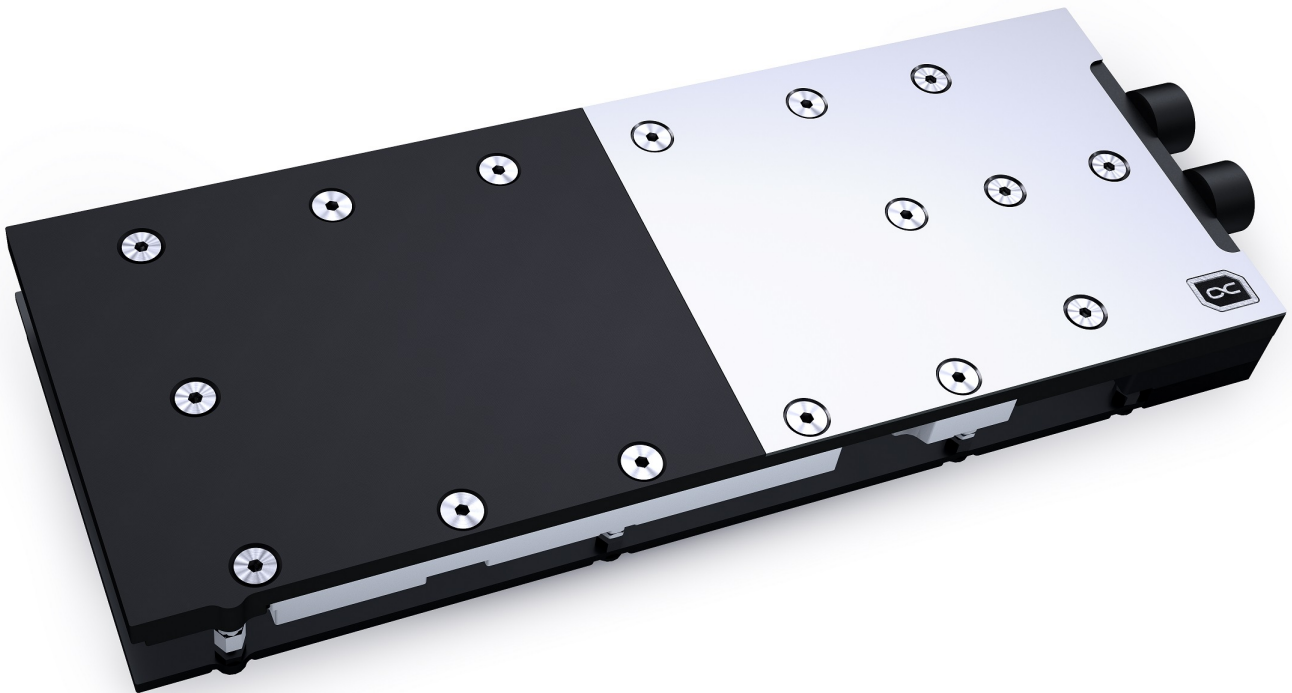


Alphacool ES RTX A5000 GPU cooler with backplate

Alphacool article number: 10669



Quick Info

The Alphacool ES RTX A5000 GPU water cooler with backplate was specially developed for the Alphacool Enterprise series. The full-cover cooler with aluminium backplate cools the GPU and all important components such as voltage converters and the graphics memory directly with water.

- Fullcover water block
- Nickel plated copper cooler

Compatibility

- PNY RTX A5000, 24GB GDDR6, 4x DP (VCNRTXA5000-PB)

Scope of delivery

1x 15x15x1mm thermal pad	4x M2x5 screws
1x 15x38x1mm thermal pad	4x M2x5 washers
2x 15x51x1mm thermal pad	8x M2x11 screws
2x 8x66x1mm thermal pad	2x M4x18 screws
1x 15x15x3mm thermal pad	1x Thermal grease
1x 15x38x3mm thermal pad	1x Cover plate
2x 15x51x3mm thermal pad	1x Hex wrench
2x 8x66x3mm thermal pad	1x backplate
1x 30x30x2mm thermal pad	

Technical data cooler

L x W x H	254,48 x 97,19 x 26,6mm
Material cooler	Nickle-plated copper
Material cooler top	acetal
Threads	2 x G1/4"
Thickness cooling fins	0,6mm
Maximum working temperature	60 °C
Pressure tested	8 Bar

Technical data backplate

L x W x H	216,55 x 95,43 x 6mm
Material	aluminium
Color	black

Download links

Manual	10669_Alphacool_ES_RTX_A5000_GPU_cooler_with_backplate_Manual.pdf
Product pictures	10669_Alphacool_ES_RTX_A5000_GPU_cooler_with_backplate_pics.zip

Packaging dimensions per unit

L x W x H	350 x 170 x 42 mm
Weight	1297 g

Other data

Certificates	CE, FC, RoHS
EAN	4250197106696
Customs code	84195080900
Guarantee	3 years

Article text

The Alphacool ES RTX A5000 GPU water cooler with backplate was specially developed for the Alphacool Enterprise series. The full-cover cooler with aluminium backplate cools the GPU and all important components such as voltage converters and the graphics memory directly with water.

Connections to the rear?

Server cases offer different dimensions than normal PC cases. To save space in width and height, the connections were moved to the back. Another advantage is that it is easier to connect the tubing of a complete server rack with this kind of positioning of the connections. This means that even quick-release fasteners with G1/4" external thread can be screwed directly to the graphics card as already offered by Alphacool.

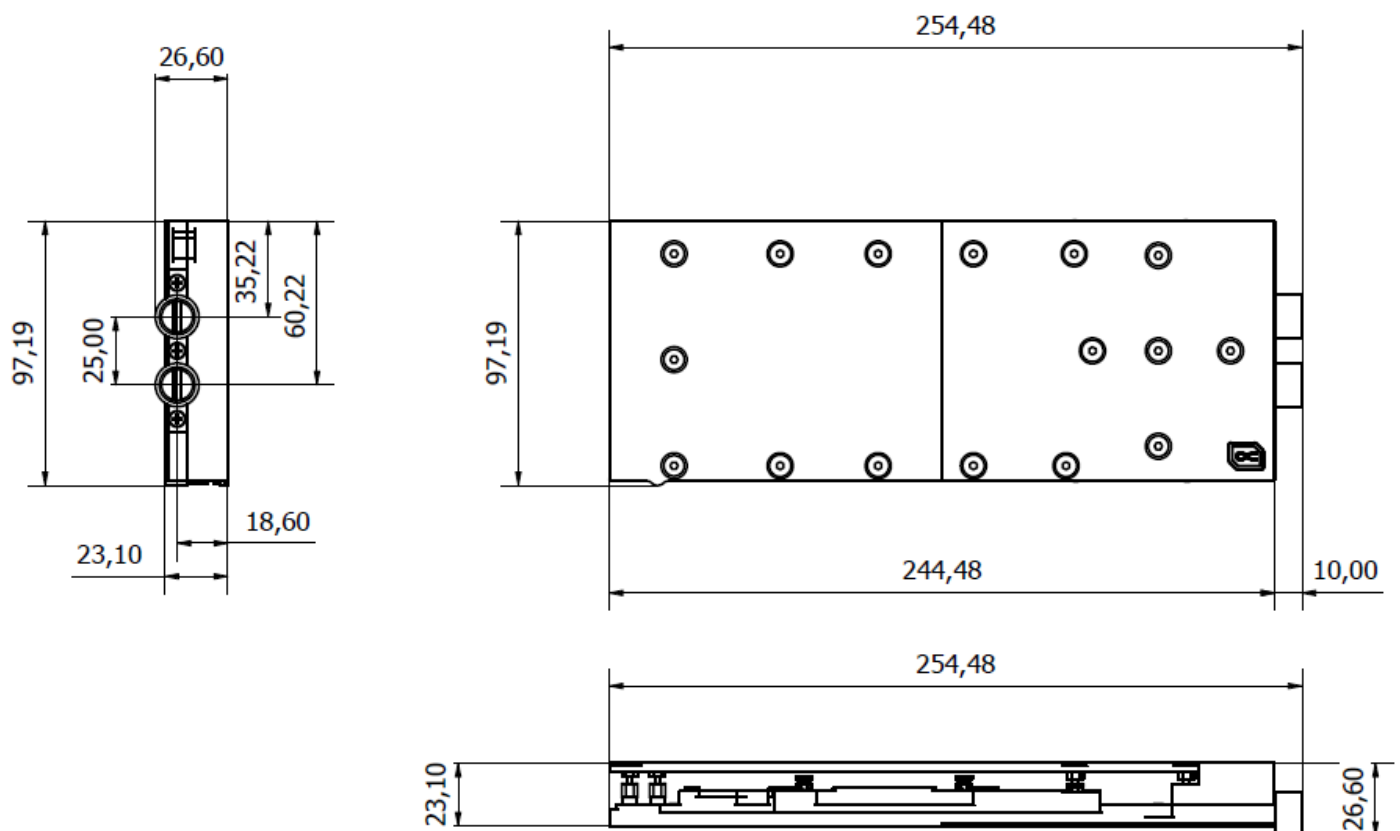
More performance!

During the development of the ES RTX A5000 graphics card waterblock, we naturally placed great emphasis on increasing performance. For the first step, the cooler was brought closer to the individual components by reducing the thermal pads to a thickness of 1mm. Next, the nickel-plated copper block was also made thinner. Instead of 7mm, it is now only 5.5mm thick. The water flow within the cooler was also optimized. All important components such as the voltage converters and the RAM are now cooled much better and more effectively by water. All this provides a significant increase in cooling performance.

Copper or aluminum?

Alphacool uses only copper for all water-carrying parts on the coolers. In the ES RTX A5000 GPU cooler the copper is nickel-plated. However, compared to the previous models, Alphacool has improved the type of nickel plating once again. This has significantly increased the acid resistance and is intended to prevent nickel plating from flaking off. Why does Alphacool use copper instead of aluminum? Copper simply has almost twice the thermal conductivity of aluminum and is therefore clearly the better material for water cooling.

Drawing (1)



Drawing (2)

